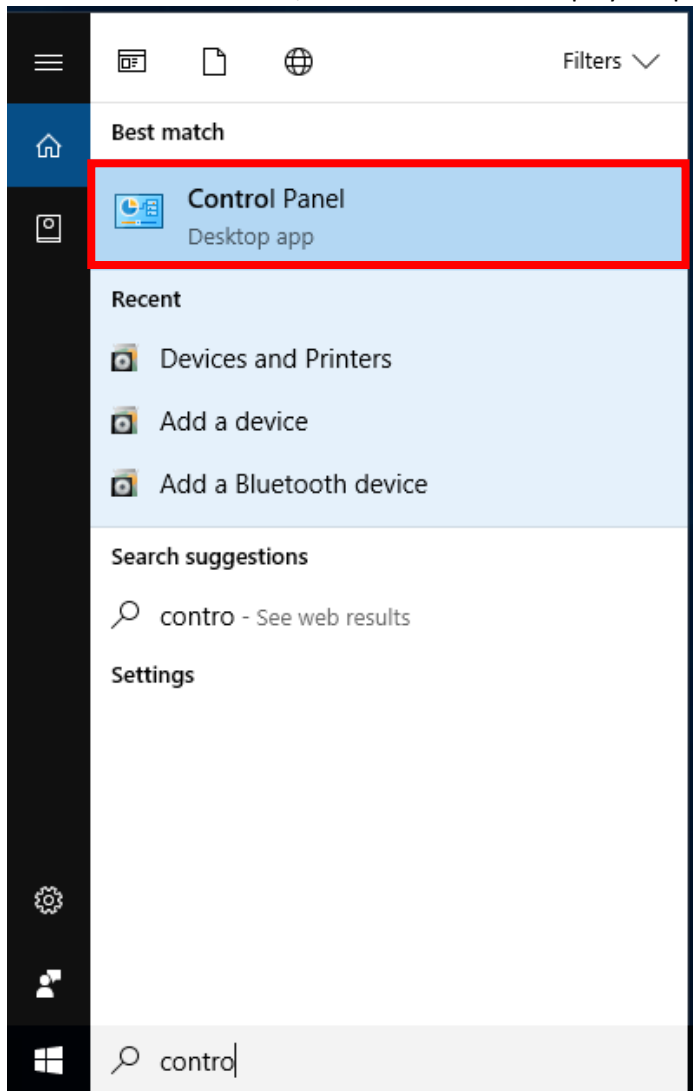
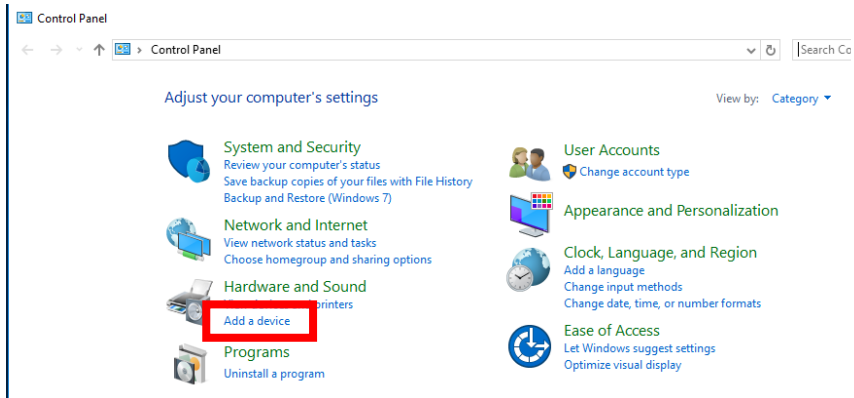


## Pairing the BigBlu to Windows 10 (Build 1703)

1. Search for Control Panel, then click on it the displayed option (pictured below) to open it



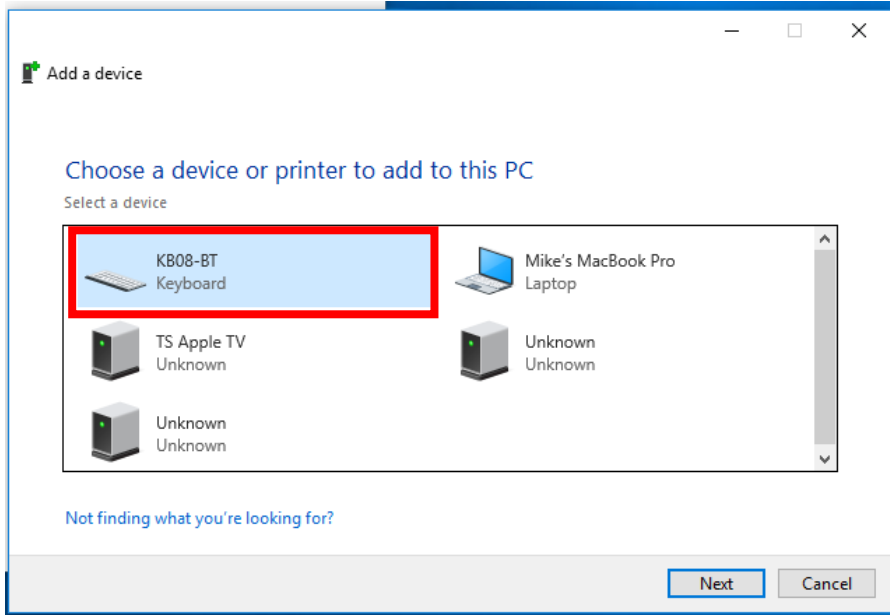
2. Click on “Add a device” (found under “Hardware and Sound”)



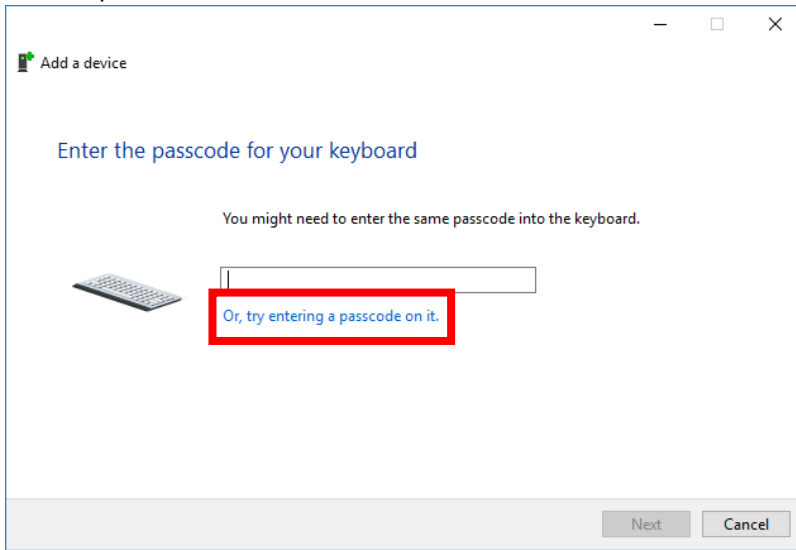
3. Press the pairing switch on the bottom of the keyboard. When done correctly, you should see the LED on the top of the keyboard begin flashing blue more quickly.



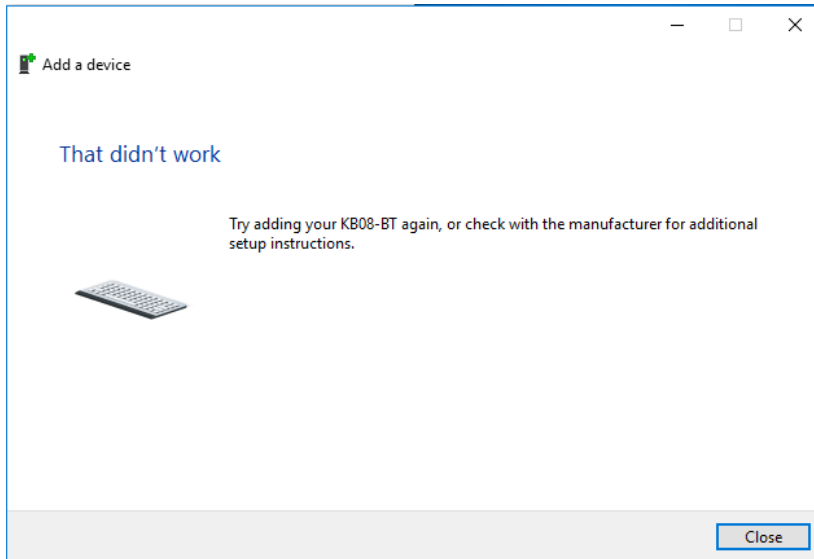
4. You should see “KB08-BT” appear on the device list. Click on it to select it, then click “Next”.



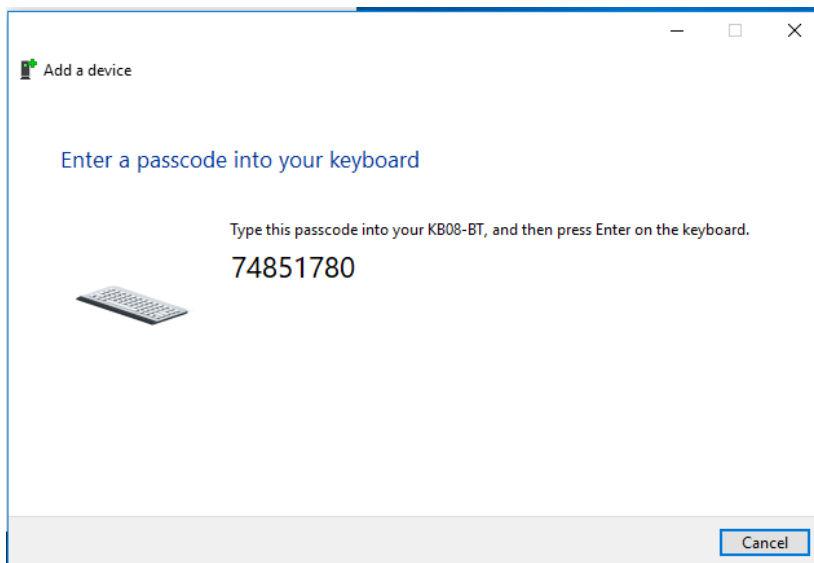
5. You should now see the screen below. You will want to click on the “Or, try entering a passcode on it.” option



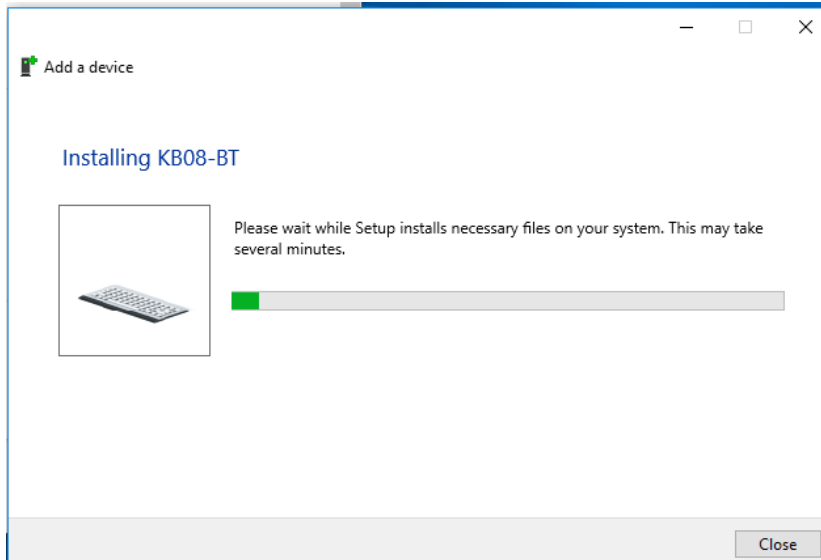
6. As Windows 10 can be a little finicky when pairing with Bluetooth devices you may see this screen a couple of times. It may be necessary to repeat these steps a few times to get a valid pairing code.



7. Ultimately, you are looking for the below screen. Please note: each code is randomly generated, so your code will be different.



8. Once your keyboard pairs successfully, you will see the screen below.



9. Once the installation is complete, you will be able to use your keyboard.